

**March 2025**

**ELIZABETH BALDWIN  
ELEMENTARY SCHOOL**

PAWTUCKET, RI

**SHAWMUT**



# Baldwin Elementary School



Spring is Coming!





# So Close but Yet So Far Away!



Imagine that your amazing new school is months away from being completed!

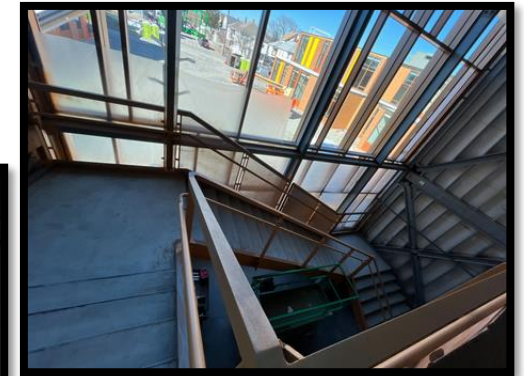
At this stage of the project, the majority of the exterior of the building is finished and each section of the interior of the school is being worked on consecutively kind of like an assembly line. It's really coming together.

*Different sections of the school are at different stages. Take a look around!*

We have discussed many phases from the beginning and now are heading into the homestretch.

The current phase includes interior finishing which we reviewed in previous presentations. We are still working on drywall, painting, ceilings, floors and we just received some of the doors.

Still so much to do.

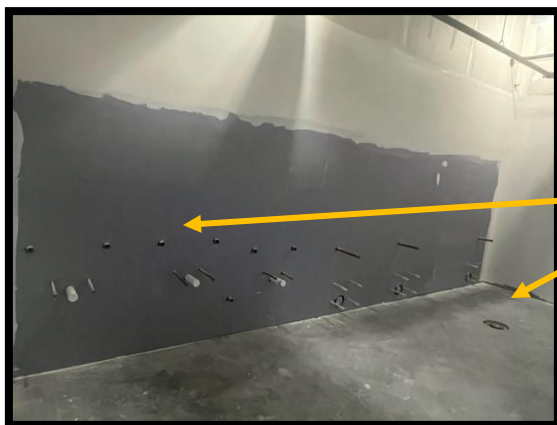




# Can you guess what is going here?

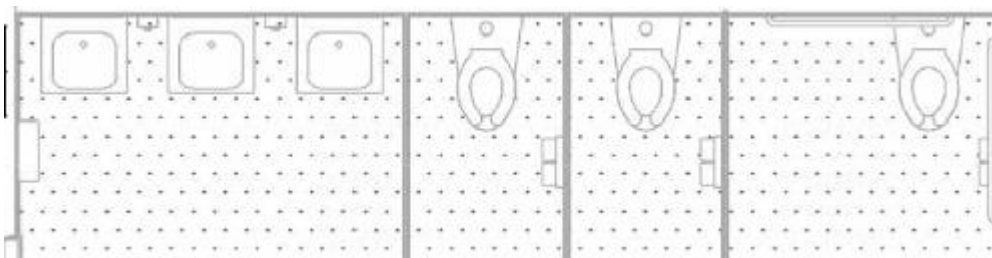
As the rooms and different spaces progress, you can start to see or guess what room it is or what could be going in that space.

Let's see how you can look at a drawing of an area and go into that room in its current stage and guess what that room is going to be.



If you went into this room, it probably looks strange but there are things that you could guess about this space based on the shape, the location, the rough-in installed on the walls and the floors.

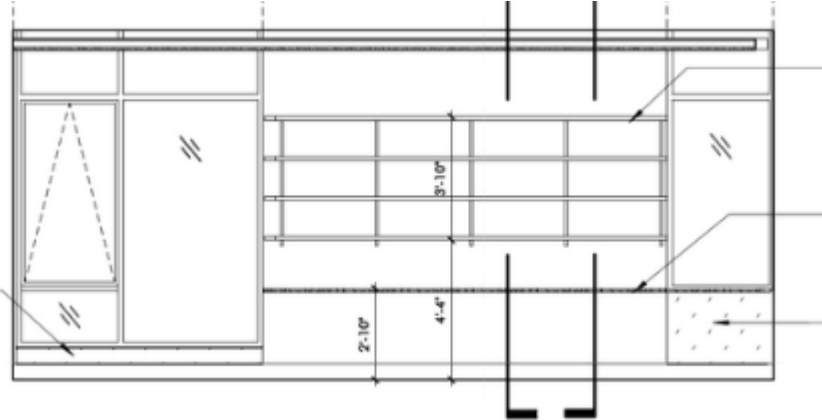
Below is a section of the drawings that I copied from the 2<sup>nd</sup> Floor. Does it make sense? Take a look at how many attachments are on the wall and how far apart they are. Why is there a drain on the floor in this room?



# This is one of your new classrooms.

If you were standing in this classroom looking toward the windows, could you tell by looking at this elevation that I copied from the drawings where you were?

The other classrooms on this floor are designed similarly but at this stage of the project, you could absolutely start to see what the construction team could see even before the rooms were built.



It's just like a game of spot the differences but in reverse!





# What is Acoustics?

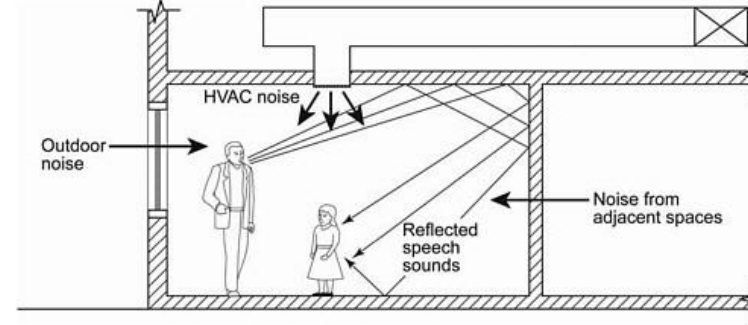
Acoustics is the science of sound: how it's made, how it travels and how we hear it.

In a classroom, the way that sound waves interact with the walls, floors, ceilings, objects and even air can impact a student's learning and teacher communication.

Let's learn a little about sound and how we are installing acoustical ceilings to help with your ability to concentrate and hear your teacher's instructions clearly.



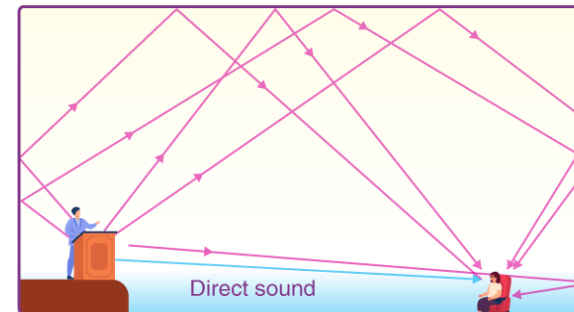
The School is using ACT Ceiling Panels that are used to reduce noise by absorbing sound waves and minimize reverberation.



## Background Noise and Reverberation

Background noises make it harder to hear and can come from mechanical equipment, people talking, outside noises from cars, and even noise from adjacent rooms.

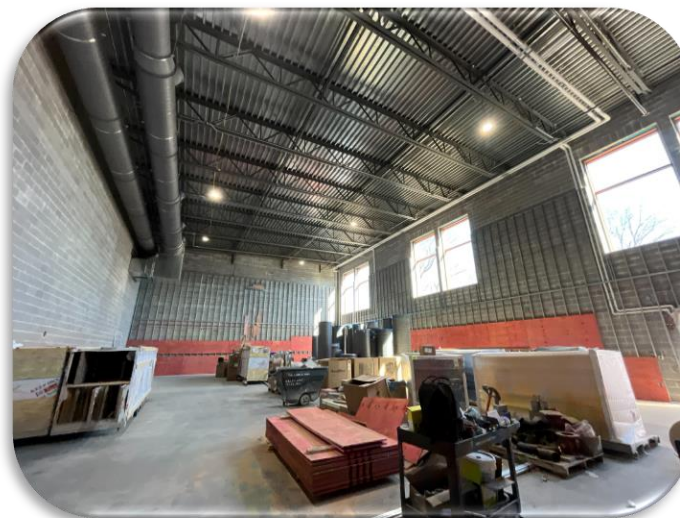
Reverberation is how sounds bounce off things. Sound waves continue to vibrate after the original sound has stopped emitting sound like an echo.





# Soon to Come....

Maybe in a couple of months,  
we can start showing you how  
amazing your gym will be!!



I had to give you a sneak peak  
at how HUGE this gym is.

